

# LAWN TENNIS

## Quadrille.



Figures composed by the society  
of Professors of Dancing  
NEW YORK.

MUSIC BY

George W. Allen.

6

NEW YORK, WM. A. POND & CO., 25. UNION SQUARE.

CHICAGO,  
CHICAGO MUSIC CO., 152 State Street.

COPYRIGHT 1881 BY WM. A. POND & CO.



# LAWN - TENNIS QUADRILLE.

Figures by the "Society of the Professors of Dancing," New York.

Music by  
GEO. W. ALLEN.

**No 1.**

*f* Ladies cross right hands, turn partners with left.

Turn partners with both hands. *p* 1st. & 2d. couples forward,

Separate and go to sides. Walk backward. Walk to places.

*mf* Head couples balance with couples on their right.

Forward and exchange ladies. Head couples balance with



couples on their left. Exchange partners. *D.C.al*

**No. 2.**

*f* All balance to corners. Turn.

*p* Head couples Right and Left with

couples on their right. Ladies half

chain. Turn new partners. *D.S.al*



## No 3.

*p*

Two gentlemen on each side hands round the lady between them.

Turn partners with right hand to places.

*f* Head couples right and left around.*mf*

All forward and

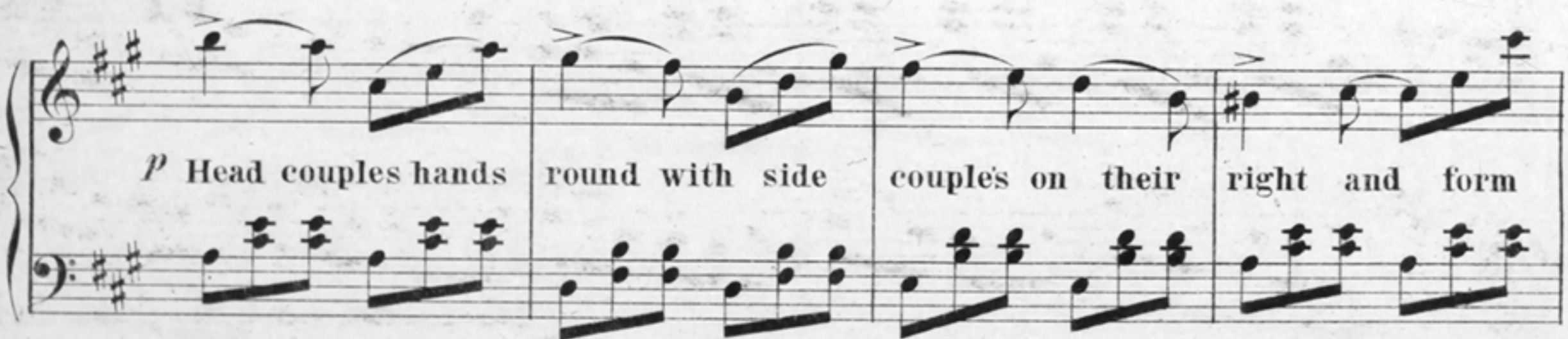
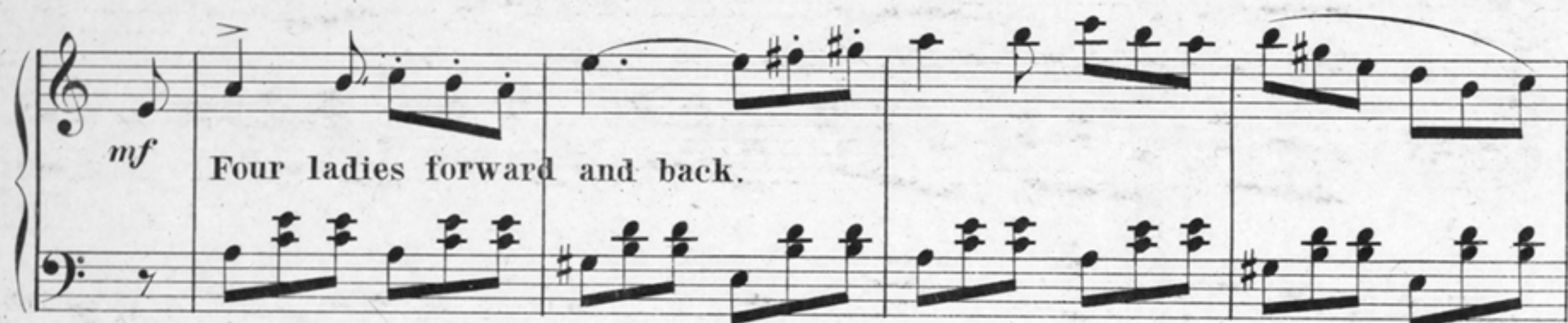
back.

Ladies in centre dos-à-dos and

salute.

*p* Half Grand Chain.







**N<sup>o</sup> 4.**

*f* All balance to partners.

Turn partners.

*p* Forward six and back. Ladies on the

left pass under. *mf* Forward six and back on the

sides. Ladies on the left pass under. *f*



*p* Forward six and back.

Ladies on the left pass under.

*mf* Forward six and

back on the sides.

Ladies on the left pass under

*f* and all go to places.

*p* Four ladies forward and back.

Four gentlemen forward and back.

*D.S.*



No 5.

All forward and back.

Side couples wheel into line.

1st. lady and 2d. gentleman chassé to the right and left. Turn partners.

All promenade half round.

Turn partners.



Turn corners with right hands and partners with left.

*mf* All promenade to places.

Turn partners. *D.S.*

**Coda.**

All salute. *f* *accel.*

*FINE.*



# LAWN TENNIS.

## NEW QUADRILLE, BY THE SOCIETY OF PROFESSORS OF DANCING, NEW YORK.

First Couple.  
\*  
\*  
Third Couple.  
\*  
\*  
Second Couple.  
\*  
\*  
Fourth Couple.  
\*  
\*

### No. 1.—MEASURING THE GROUND.

FIRST AND SECOND COUPLES FORWARD (four walking steps),	Measures	2
SEPARATE FROM PARTNERS (turning backs to each other) and each partner go to nearest side,		2
WALK BACKWARD, four steps, on third side of square,		2
FACE PARTNERS AND WALK TO PLACES,		2
[During the foregoing eight measures of music, each partner of First and Second Couples describes a square.]		
FIRST AND SECOND COUPLES BALANCE WITH COUPLES ON THEIR RIGHT,		4
EXCHANGE PARTNERS, all the gentlemen returning to their places with opposite ladies,		4
FIRST AND SECOND COUPLES BALANCE WITH COUPLES ON THEIR LEFT, and exchange partners,		8
LADIES' HALF DOUBLE CHAIN (the four ladies cross right hands <i>en moulinet</i> , go half round and turn partners with left hands),		4
TURN PARTNERS WITH BOTH HANDS,		4
Repeat the entire figure,		32
Third and fourth times, counterpart for side couples.		

### No. 2.—THE VARIED CHAINS.

FIRST AND SECOND COUPLES RIGHT AND LEFT ( <i>Chaine Anglaise</i> ) WITH SIDE COUPLES ON THEIR RIGHT,	8
LADIES' HALF CHAIN,	4
TURN NEW PARTNERS,	4
ALL BALANCE AT CORNERS AND TURN,	8
FIRST AND SECOND COUPLES RIGHT AND LEFT WITH SIDE COUPLES ON THEIR LEFT,	8
LADIES' HALF CHAIN,	4
TURN NEW PARTNERS,	4
ALL BALANCE AT CORNERS AND TURN,	8
Repeat all the above to bring the ladies to their original places.	

### No. 3.—THE ROUNDS.

FIRST AND SECOND COUPLES RIGHT AND LEFT AROUND (the same as Grand Chain, but performed by two couples only),	8
ALL FORWARD AND BACK,	4
LEAVE LADIES IN CENTRE DOS-À-DOS AND SALUTE,	4
HALF GRAND CHAIN,	8
FOUR LADIES FORWARD AND BACK,	4
LADIES' HALF DOUBLE CHAIN,	4
HEAD COUPLES HANDS ROUND WITH SIDE COUPLES ON THEIR RIGHT, AND FORM LINES, thus: The First and Third Couples hands round and form line on first couple's place, facing centre; at the same time second and fourth couples hands round and form parallel line, facing centre. The lines are formed by the first and second gentlemen disengaging their left hands, drawing the others along, and taking the extreme left of their respective lines,	8
HANDS ROUND THE LADY (the two gentlemen on each side hands round the lady between them and exchange places, thus placing each gentleman opposite his own partner),	4
TURN PARTNERS WITH RIGHT HANDS TO PLACES,	4
The entire figure is repeated by the head couples.	
Third and fourth times, the side couples perform the Right and Left Around, and Hands Round with the head couples on their right, and form lines on the sides, the third and fourth gentlemen taking the extreme left of their respective lines. The other portions of the figure are analogous to the first and second times.	

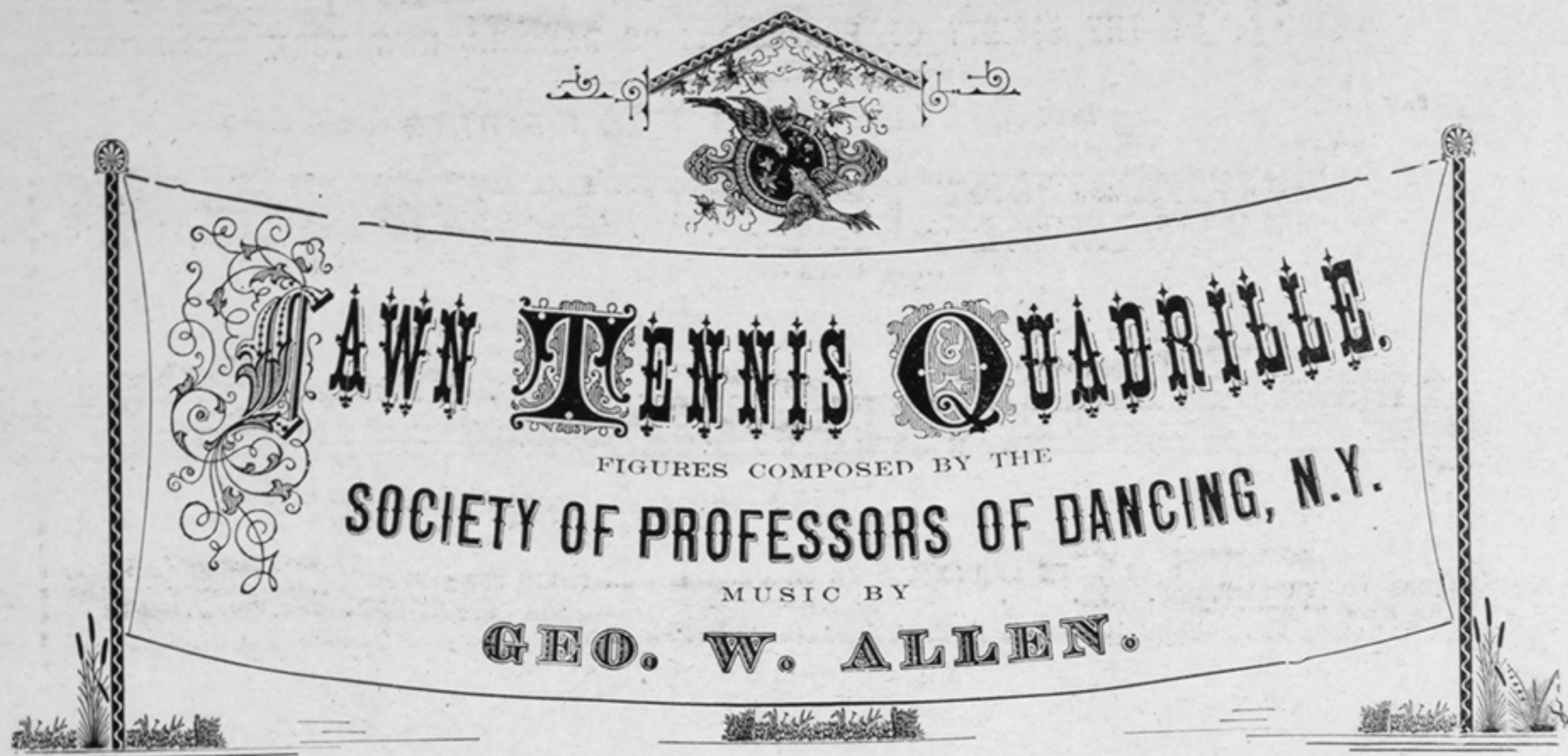
### No. 4.—THE DOUBLE PASTOURELLE.

SIX FORWARD AND BACK, thus: The First and Second gentlemen keeping their partners' left hands, take with their left hands the ladies at their left, who leave their partners in their places. The six forward and back,	4
LADIES ON THE LEFT PASS UNDER. The First and Second Couples raise their hands so that the ladies on the left may pass under, and all the ladies cross to the gentlemen on the sides; the first lady taking position on the right of fourth gentleman, while the fourth lady takes position on the left of third gentleman, and at the same time the second lady crosses over to the right of third gentleman, while the third lady goes to the left of fourth gentleman,	4
SIX FORWARD AND BACK,	4
LADIES ON THE LEFT PASS UNDER (all the ladies going to the head gentlemen),	4
SIX FORWARD AND BACK,	4
LADIES ON THE LEFT PASS UNDER (all the ladies going to the sides),	4
SIX FORWARD AND BACK,	4
LADIES ON THE LEFT PASS UNDER, and all the ladies finish in their original places,	4
FOUR LADIES FORWARD AND BACK,	4
FOUR GENTLEMEN FORWARD AND BACK,	4
ALL BALANCE TO PARTNERS AND TURN,	8
The entire figure is repeated. Third and fourth times the figure commences by the side gentlemen taking the ladies from the heads.	

### No. 5.—LAWN TENNIS (THE NET).

ALL FORWARD AND BACK,	4
THIRD AND FOURTH COUPLES WHEEL INTO LINE: The third and fourth gentlemen retaining their partners' hands, pass their ladies toward the centre so as to form a line across the set, leaving a space in the centre, the third couple facing the side of the square upon which the first couple stands, and the fourth couple facing that upon which the second couple stands. As these two couples are wheeling into line, the first couple forward and the first gentleman takes position in centre of line facing his partner, the first lady retiring to her place, while the second couple move to the right oblique, and the second lady takes position to the left of the fourth gentleman facing her partner, the second gentleman retiring to his place,	4
FIRST LADY AND SECOND GENTLEMAN CHASSÉ TO THE RIGHT,	2
DÉCHASSÉ TO THE LEFT,	2
ALL TURN PARTNERS TO PLACES,	4
ALL PROMENADE HALF ROUND,	4
TURN PARTNERS,	4
TURN CORNERS WITH RIGHT HANDS,	4
TURN PARTNERS WITH LEFT HANDS,	4
ALL PROMENADE TO PLACES,	4
TURN PARTNERS,	4
The entire figure is repeated by the head couples, with the difference that the second gentleman takes position in centre of line, and the first lady takes position at the left of third gentleman, and their partners perform the chassé and déchassé.	
Third and fourth times, counterpart for side couples, the head couples wheeling into line.	
To finish—All salute partners.	





Society of Professors of Dancing, New York.

BROOKES, L. DE G., New York.

DE GARMO, WM. B., New York.

HLASKO, M., New York.

MARTIN, JOSEPH T., Brooklyn, N. Y.

MANUEL, R. S., New York.

RIVERS, C. H., Brooklyn, N. Y.

URIS, JOHN T., Brooklyn, N. Y.

ANDREWS, M. H., Bangor, Me.

ANDERSON, V. V., Mrs., Louisville, Ky.

ASHER, S., Philadelphia, Pa.

BOURNIQUE, A. E., Chicago, Ill.

BOURNIQUE, A. E., Mrs., Chicago, Ill.

DARRACOTT, C. J., Mrs., Lowell, Mass.

FANNING, THOS. C., Poughkeepsie, N. Y.

LE BRUN, CYRILLE E., Manchester, N. H.

MILLER, JOHN P., Norwich, Conn.

MARTINE, J. EDWIN, Chicago, Ill.

NOTT, F. X. C., St. Louis, Mo.

VANCE, J. C. H., Cleveland, Ohio.

SPINK, S. D., Providence, R. I.

VIZAY, L. W., Milwaukee, Wis.

WALKER, RUSS B., Boston, Mass.