

*The*  
ROYAL ANN  
M<sup>r</sup> Isaac's  
New DANCE.

made for  
Her MAJESTY'S Birth Day

<sup>1712</sup>  
*The Tune by M<sup>r</sup> Paisible!*

*Engraven in Characters & Figures for y<sup>e</sup> use of Masters*

*Note these following Dances by M<sup>r</sup> Isaac are likewise Printed.*

*Viz The Rigadoon Royal.*

*The Royal Galliarde.*

*The Royal Portuguez.*

*The Saltarella.*

*The Union.*

*The Brittainia.*

*The Spanheim.*

*The Favourite.*

*The Richmond.*

*The Rigadoon.*

*The Rondeau.*

*The Princess.*

*The Gloster.*

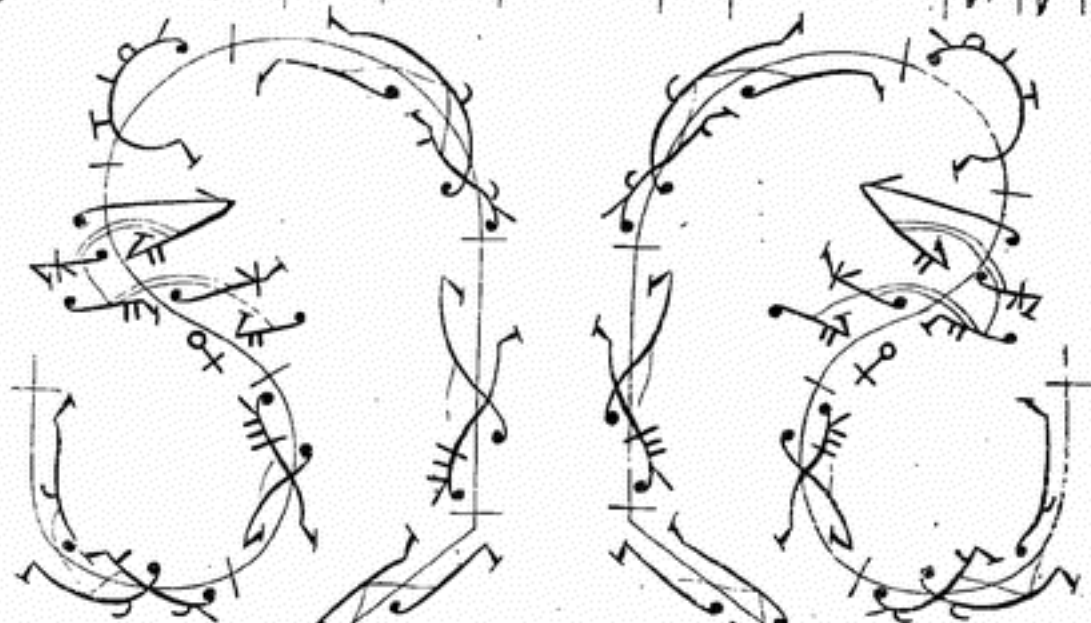
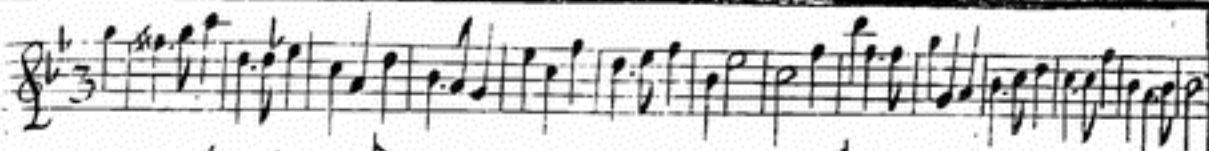
*The Marlborough.*

*The Royal.*

*The Northumberland.*

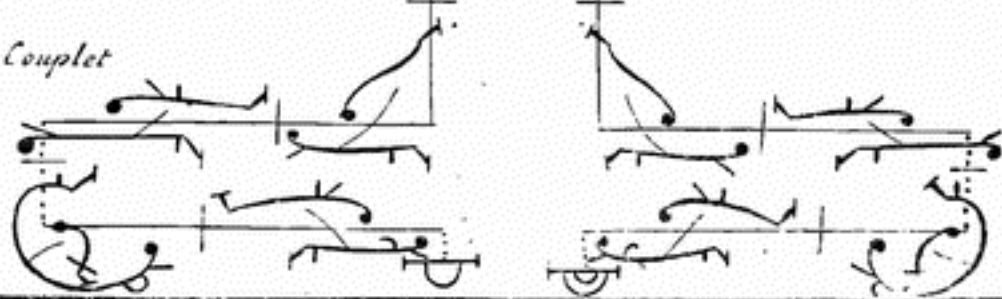
*And y<sup>e</sup> Art of Dancing done in Characters*

*Printed for T. Wallis Serv<sup>t</sup> in Ordinary to Her Majesty at the  
Harp & Hoboy in Katherine Street in y<sup>e</sup> Strand. & J. Hare  
at y<sup>e</sup> Viol & Flute in Cornhill near the Royal Exchange.*

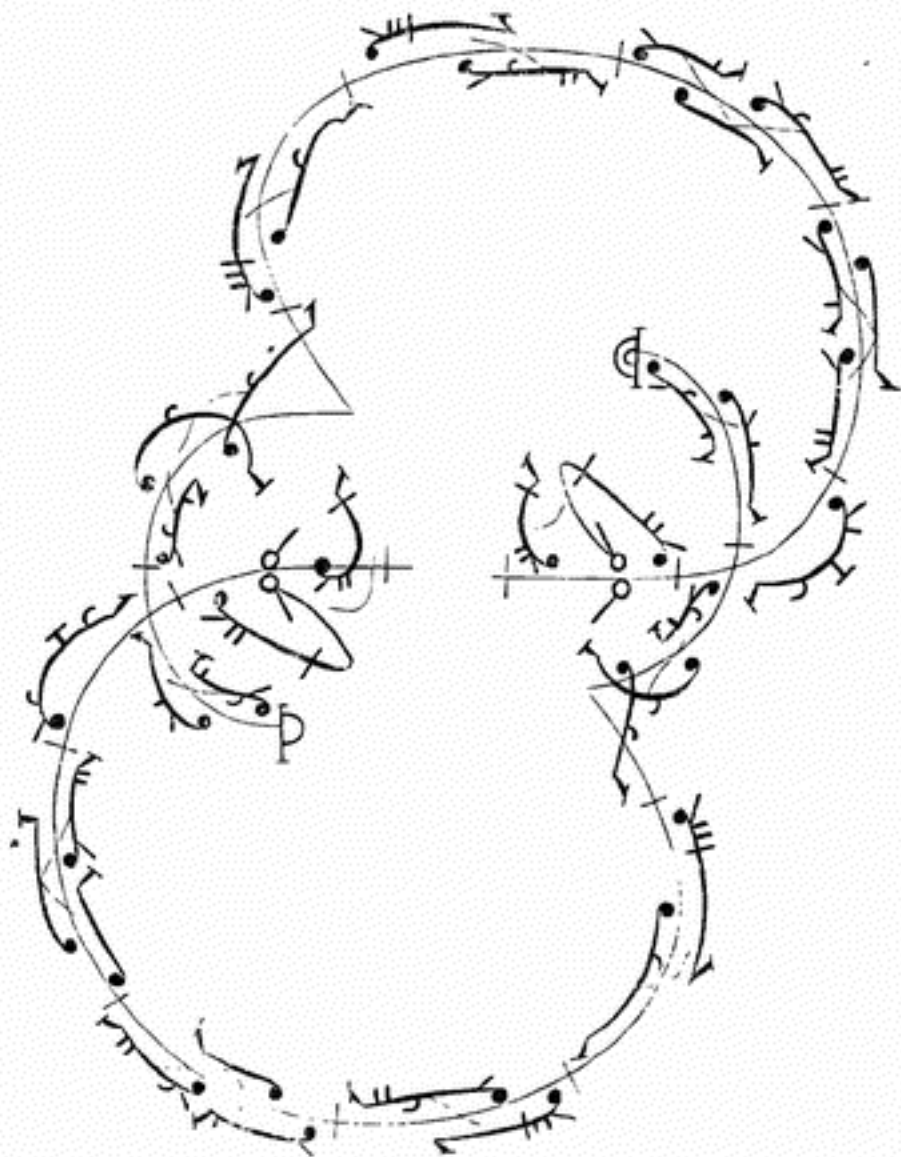


*The Royal!*  
*Ann -*

*1<sup>st</sup> Couplet*

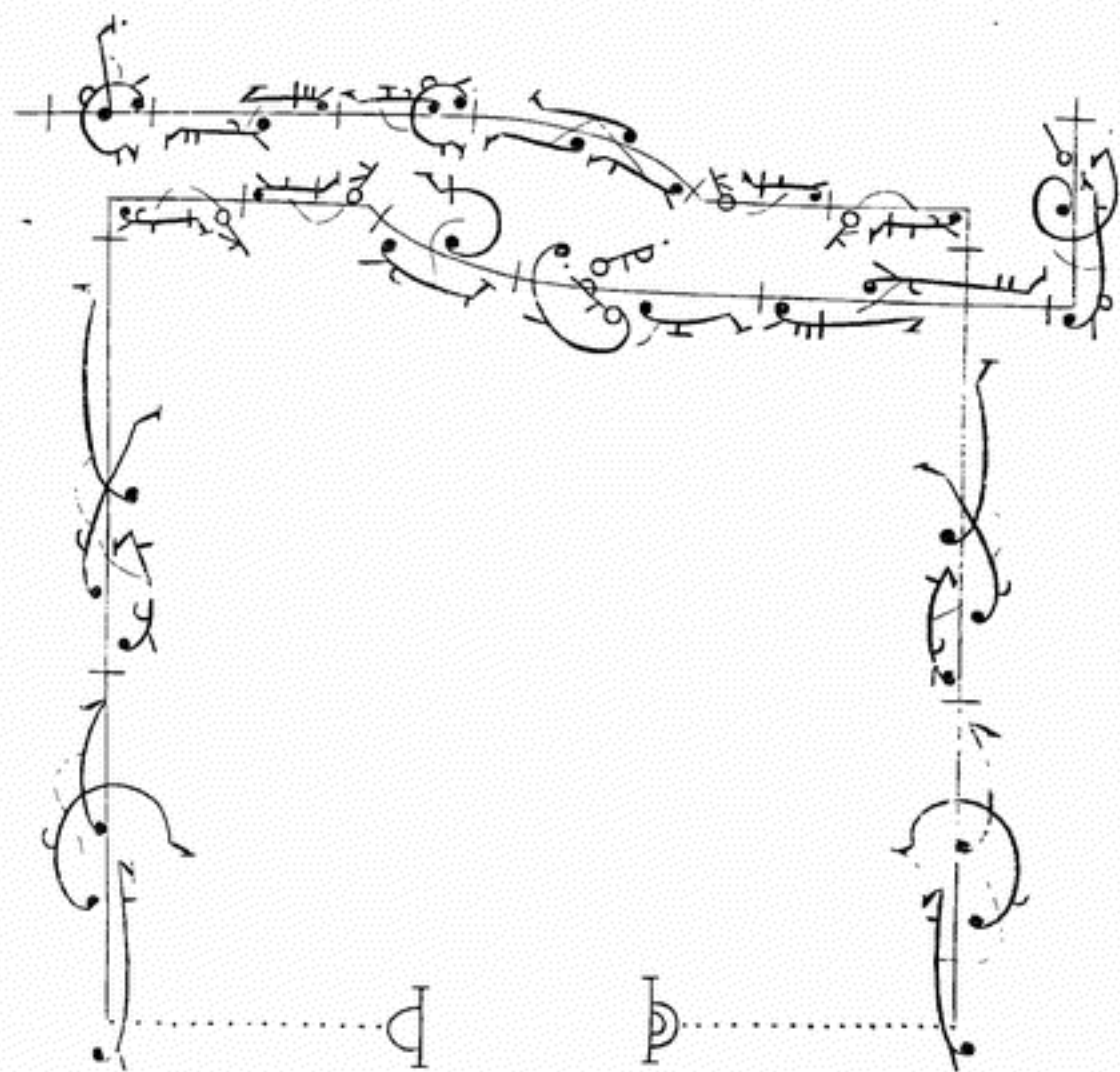
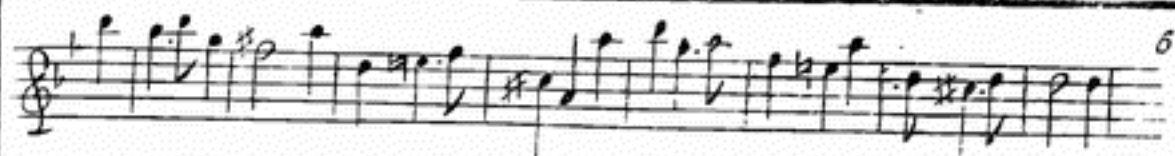


The image displays a page of handwritten musical notation, page 2, enclosed in a rectangular border. The notation is arranged in a circular pattern, starting from the top left and moving clockwise. It features several staves with various musical symbols, including notes, rests, and clefs. The notation is dense and intricate, with many notes and rests connected by lines, suggesting a complex piece of music. The page is numbered '2' in the top right corner. At the bottom left, there is a small signature or text that reads "s. Comp. let."



3 couplet





is Couplet





