

Twenty Four COUNTRY DANCES for the Year 1771

With proper Tunes & Directions to each Dance, as they are performed at Court, Bath, & all Publick Assemblies. Price 6^d

L O N D O N

Printed for Cha^s & Jam^s Thompson, in S^t. Pauls Church Yard.

Where may be had

200 Favourite Country Dances Bound	8	4
100 Favourite Minuets for the Harpsichord Violin or German Flute	3	6
3 Books of Favourite Hornpipes	3	6
Adams's Psalms & Anthems for Country Churches Bound	Each	1 0
Instruction Books to learn the Violin, Flute, German Flute, Fife, Guittar,	5	0
French Horn, Harpsichord, Hautboy, Bagpipes, Flauto and Singing	Each	1 6

... 0700 ... 0271

Sweet Richard

1771

Ride a Mile

73

145

The musical notation for 'Sweet Richard' consists of four staves of music in G major (one sharp) and common time. The first staff begins with the number '145'. The music features a mix of eighth and sixteenth notes, with some measures containing beamed eighth notes. There are repeat signs at the end of the second and fourth staves.

146

The musical notation for 'Ride a Mile' consists of four staves of music in G major (one sharp) and 9/8 time. The first staff begins with the number '146'. The music features a mix of eighth and sixteenth notes, with some measures containing beamed eighth notes. There are repeat signs at the end of the second and fourth staves.

The 1st Cu. cast off, Hands 4 round with the 3^d Cu. cast
 off. Hands 4 round with the 2^d Cu. lead down two Cu. the
 1st and 3^d Cu. follow cross over one Cu. Right and Left

The 1st Cu hands 3 round with the 2^d Wo. the
 same with the 2^d Man cross over two Cu
 lead up to the Top and cast off



Warwickshire Will

147

Musical notation for Warwickshire Will, measures 147-150. The piece is in C major, 6/8 time, and consists of four staves of music. The notation includes various rhythmic values such as eighth and sixteenth notes, and rests.

Lead thro' one Cu. and cast up $\ddot{}$ the 2^d Cu. lead thro' the top Cu. and cast off $\ddot{}$ Sett and not turn, cast off one Cu. and turn $\ddot{}$ Hands 4 round at bottom, Right and Left at Top $\ddot{}$

Cullodon Fight

148

Musical notation for Cullodon Fight, measures 148-151. The piece is in D major, 6/8 time, and consists of four staves of music. The notation includes various rhythmic values such as eighth and sixteenth notes, and rests.

The 1st Cu. cros over two Cu $\ddot{}$ Cros up again $\ddot{}$ right hands acros round $\ddot{}$ left hands back again $\ddot{}$ Sett acros and turn $\ddot{}$ the Wo. do the same $\ddot{}$ cros over half figure $\ddot{}$ Right and Left $\ddot{}$

A Trip to Dunsburn

Miss Fargiharson's Reel

149

The musical notation for 'A Trip to Dunsburn' consists of four staves of music. The first staff begins with a treble clef, a key signature of one flat (B-flat), and a 6/8 time signature. The melody is written in a single line. The second staff continues the melody with a repeat sign at the end. The third and fourth staves continue the piece, with the fourth staff ending with a repeat sign.

150

The musical notation for 'Miss Fargiharson's Reel' consists of four staves of music. The first staff begins with a treble clef, a key signature of two sharps (D major), and a common time signature. The melody is written in a single line. The second staff continues the melody with a repeat sign at the end. The third and fourth staves continue the piece, with the fourth staff ending with a repeat sign.

The 1st C. cast off and hands all 4 round; cast up, hands all 4 round; gallop down and up and cast off; Right and Left.

The 1st C. cross over and turn; then cross over the 3^d C. and turn; lead up to the Top, foot it and cast off; hands six round.

Rose Hill

151

Musical notation for 'Rose Hill' in treble clef, key of D major (two sharps), and 6/8 time. The piece consists of four staves of music. The first staff begins with a treble clef, a key signature of two sharps, and a 6/8 time signature. The music is written in a single melodic line. The second staff continues the melody. The third staff continues the melody. The fourth staff concludes the piece with a double bar line and repeat dots.

The 1st Cu. cast off one Cu. and cross over the 3^d Cu. & come up again :: the 1st Cu. lead down two Cu. & the 3^d Cu. follow :: cross over and turn ::

The Farm House

152

Musical notation for 'The Farm House' in treble clef, key of B minor (two sharps), and 9/8 time. The piece consists of four staves of music. The first staff begins with a treble clef, a key signature of two sharps, and a 9/8 time signature. The music is written in a single melodic line. The second staff continues the melody. The third staff continues the melody. The fourth staff concludes the piece with a double bar line and repeat dots.

The 1st Cu. Hands round with the 2^d Wo. & the same with the 2^d Man :: cross over two Cu. & up to the Top and cast off :: hands 4. round bottom :: Right and Left ::

The 18th of April

153

Musical notation for 'The 18th of April' in G major, 3/8 time. It consists of four staves of music. The first staff begins with a treble clef, a key signature of one sharp (F#), and a 3/8 time signature. The music is a single melodic line with various note values and rests, ending with a double bar line and repeat dots.

The 1st Cu. lead down two Cu. and cast up, the 2^d & 3^d Cu. follow; hands 4 round at Top; back to back and cast off one Cu.; Right and Left;

Cupid's Frolick

154

Musical notation for 'Cupid's Frolick' in G major, 3/2 time. It consists of four staves of music. The first staff begins with a treble clef, a key signature of one sharp (F#), and a 3/2 time signature. The music is a single melodic line with various note values and rests, ending with a double bar line and repeat dots.

Turn right hands and cast off one Cu.; turn left hands and cast up again; half figure down on your own sides; the same up again; lead down two Cu. cast up one; lead thro' the Top and cast off; hands across at bottom; Right and Left at Top;

Warwick Court

155

The musical notation for 'Warwick Court' consists of three staves of music in treble clef, with a key signature of two sharps (F# and C#) and a 2/4 time signature. The first staff begins with a tempo marking of 155. The music features a mix of eighth and sixteenth notes, with some rests and a repeat sign at the end of the second staff.

The 1st and 2^d Cu. right hands acrofs ÷ cast off
 and left hands acrofs with the 3^d Cu ÷ the 1st Man
 heys with the 3^d Cu. and the Wo. with the 1st Cu ÷
 Right and Left at Top ÷

The jovial Fellow

156

The musical notation for 'The jovial Fellow' consists of three staves of music in treble clef, with a common time signature (C). The music features a mix of eighth and sixteenth notes, with some rests and a repeat sign at the end of the second staff.

Cast off two Cu ÷ lead up to the Top and cast
 off ÷ hands six round ÷ Right and Left at Top ÷

Bonny Kate of Aberdeen

157

The musical notation for 'Bonny Kate of Aberdeen' consists of four staves of music. Each staff begins with a treble clef, a key signature of one sharp (F#), and a common time signature (C). The melody is written in a single line on each staff, featuring a mix of eighth and sixteenth notes with various rests. The piece concludes with a double bar line and repeat dots.

Play contrary sides ÷ then Play your own sides ÷ cross
 over 2 Cu. lead up the middle and cast off ÷ Hands 6
 round and right and left at Top ÷

The Humours of Wapping

79

158

The musical notation for 'The Humours of Wapping' consists of four staves of music. Each staff begins with a treble clef, a key signature of two flats (Bb, Eb), and a common time signature (C). The melody is written in a single line on each staff, featuring a mix of eighth and sixteenth notes with various rests. The piece concludes with a double bar line and repeat dots.

Foot it all 4 half right and left round ÷ the
 same back again ÷ cross over 2 Cu. lead up to
 the Top and cast off ÷ Hands 4 round at both
 right and left at Top ÷

The Scotch Ramble



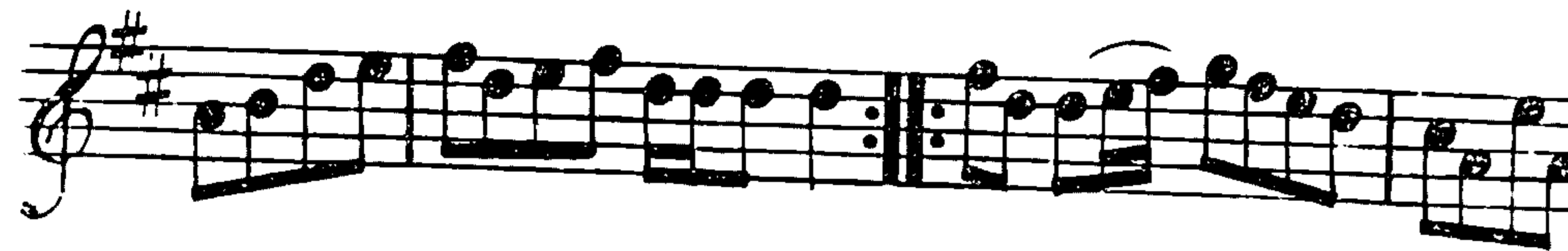
Hey contrary sides ♪ then Hey your own sides ♪ lead
down the middle, up again and call off ♪ right and left
at Top ♪

Trip to Paris



Figure down contrary sides ♪ up again on your
own sides ♪ right hands across ♪ left hands back ♪
fett all 4 and change places ♪ the same back again ♪
cross over one Cu. and turn ♪ right and left ♪

You be Welcome here again



Hands 3 with the 2^d Wo. the same with the 2^d Man. cross over 2 Cu. lead up the middle and cast off. sett corners and turn. lead out sides.

Salvietina



Cast off 2 Cu. lead up the middle and cast off. Man hands 3 at bottom Wo. at top. right and left at top.

The Breast Knott

163

Three staves of musical notation for 'The Breast Knott'. The first staff begins with a treble clef, a key signature of one sharp (F#), and a common time signature (C). The music consists of a series of eighth and sixteenth notes, with some rests. The second and third staves continue the melody with similar rhythmic patterns and include repeat signs.

Cast off 2 Cu $\ddot{\text{v}}$ lead up the middle and cast off $\ddot{\text{v}}$ Hands 4 round at bottom $\ddot{\text{v}}$ right and left at top $\ddot{\text{v}}$ Sett corners and turn $\ddot{\text{v}}$ $\ddot{\text{v}}$ lead out sides $\ddot{\text{v}}$ $\ddot{\text{v}}$

The Highland Wedding

164

Four staves of musical notation for 'The Highland Wedding'. The first staff begins with a treble clef, a key signature of one sharp (F#), and a common time signature (C). The music features a mix of eighth, sixteenth, and quarter notes, with some beamed eighth notes. The second and third staves continue the melody, and the fourth staff concludes with a repeat sign.

Foot it all 4, half right and left $\ddot{\text{v}}$ the same back again $\ddot{\text{v}}$ lead thro' the bottom, the 2^d Cu. follow and foot it $\ddot{\text{v}}$ cross over and turn, right and left $\ddot{\text{v}}$

Europa

165

Musical notation for 'Europa' in G major, 2/4 time. It consists of three staves of music. The first staff begins with a treble clef, a key signature of one sharp (F#), and a 2/4 time signature. The music features a series of eighth and sixteenth notes, with some beamed sixteenth notes. The second and third staves continue the melody, each ending with a double bar line and repeat dots.

The Jubilee

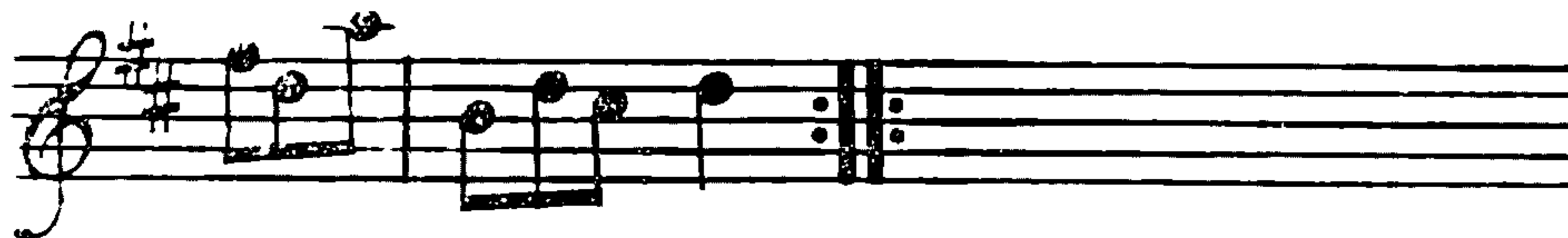
166

Musical notation for 'The Jubilee' in G major, 2/4 time. It consists of three staves of music. The first staff begins with a treble clef, a key signature of one sharp (F#), and a 2/4 time signature. The melody is similar to 'Europa' but with a different rhythmic pattern. The second and third staves continue the piece, ending with double bar lines and repeat dots.

Cast off 2 Cu. ♯ lead up the middle and cast off; ♯
 Hands 6 round ♯ right and left at top ♯

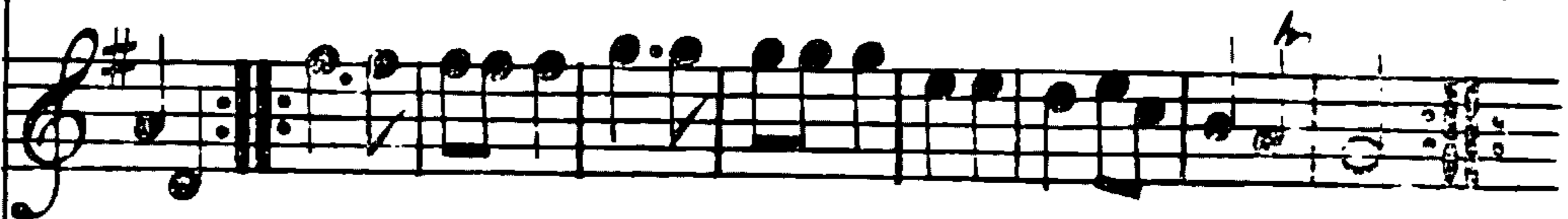
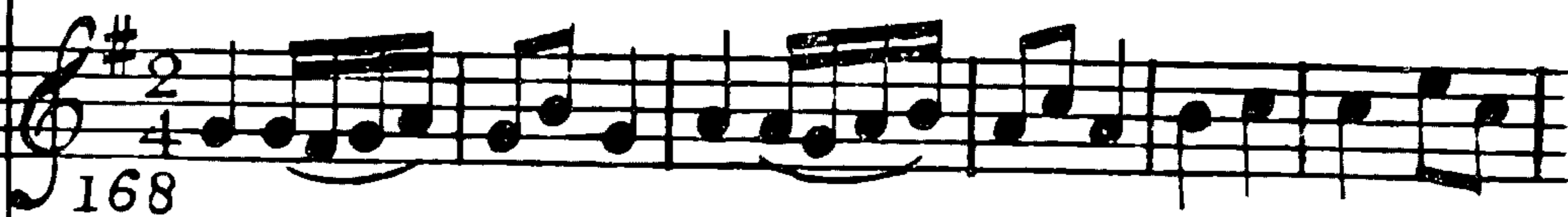
Right hands acrofs quite round ♯ Left hands back
 again ♯ crofs over and half figure ♯ right and
 left ♯

The Norfolk Freeholders



Right hands across half round \ddagger Left hands
back again \ddagger cross over one Cu \ddagger right and
left \ddagger

The German Dance



Foot it all 4 and change sides \ddagger the same back a-
gain \ddagger lead down the middle 2 Cu. foot it and lead
out of one Cu \ddagger turn right hands with your Partner
then left \ddagger Hands 4 at bottom \ddagger Right and Left
The end

Source Citation: "Twenty four country dances for the year 1771 : with proper tunes & directions to each dance, as they are perform'd at court, Bath, & all publick assemblys." London, [1770?]. Eighteenth Century Collections Online. Gale. Newcastle University. 28 Aug. 2009 <http://find.galegroup.com/ecco/infomark.do?&contentSet=ECCOArticles&type=multipage&tabID=T001&prodId=ECCO&docId=CB3327663241&source=gale&userGroupName=new_itw&version=1.0&docLevel=FASCIMILE>