

Button and Whitaker's

TWENTY FOUR COUNTRY DANCES,

With Figures by Mr. Wilson.

For the Year 1813, Adapted for the

Violin, German Flute or Shoe.

Pr: 1^s

L O N D O N

Printed by the Editors at their Wholesale Music & Musical Instrument Warehouse 75 St. Pauls Church Yard.

Where may be had

Twelve Fashionable Country Dances Reels & Waltzes, with Figures, for the Year 1813, Adapted for the Harp or Piano Forte. Price 1/6.

Also

Button & Whitaker's Selection of Country Dances, Reels & Waltzes, adapted for the Harp, Piano Forte, Violin or German Flute, with Figures.

This elegant Selection is Printed Quarterly, on Sheets, & Paged onward for the convenience of Binding, Nos 1 to 20, are already Published. — Price 1^s each.

BUTTON AND WHITTAKER'S DANCES 1813.

The Toy.

Musical notation for 'The Toy' in 6/8 time, consisting of four staves of music.

SINGLE FIGURE (1st strain repeated 2^d play'd straight thro')

The three Ladies lead round the three Gent: the three
Gent: lead round the three Ladies whole poussette & swing corners.

OR THUS

Hey contrary sides hey on your own sides swing round two Cu:
cross over one Couple and half figure round the top Couple.

The Raffle.

Musical notation for 'The Raffle' in 2/4 time, consisting of four staves of music.

SINGLE FIGURE (Each strain repeated)

Hands across and back again lead down the
middle up again and allemande.

DOUBLE FIGURE (Tune play'd twice thro' with repeats)

Set & change sides set & back again cross over 2 Cu: & set at
bottom lead up the mid: cast round the top Cu: & turn
hands six round and back again.

Lady Frances Pratt's Fancy.

Musical notation for 'Lady Frances Pratt's Fancy' in 6/8 time, featuring a treble clef and a key signature of one flat. The piece consists of four staves of music. The first two staves are marked '1st' and '2nd' with a double bar line and repeat sign. The music is written in a single melodic line.

DOUBLE FIGURE (Each strain repeated)

Swing with right hands round the 2^d Cu: the 2^d Cu: do the same lead down the middle up again allemande and turn corners.

OR THUS

Chain figure 6 round lead down the mid: up again lead thro' the top Cu: & turn set & half right & left with the bottom Cu: & lead outside.

Lady Egremont's Waltz.

Musical notation for 'Lady Egremont's Waltz' in 3/8 time, featuring a treble clef and a key signature of one sharp. The piece consists of four staves of music. The first two staves are marked '1st' and '2nd' with a double bar line and repeat sign. The music is written in a single melodic line.

SINGLE FIGURE (Each strain repeated)

Hands 3 round on the Ladies side hands 3 round on the Gents: side cross over one Cu: half figure round the bottom Cu: the Lady whole figures round the bottom Cu: & the Gent: round the top.

OR THUS

Swing with right hands round the 2^d Cu: then with left hands six round & back & set & half right & left with the 3^d Cu:.

Here and There.

Lady Olivia Sparrow's Hornpipe.

The image shows two musical pieces. On the left is 'Lady Olivia Sparrow's Hornpipe', and on the right is 'Here and There'. Both are written in treble clef with a key signature of one sharp (F#) and a common time signature (C). The notation consists of four staves for each piece, with a vertical wavy line separating them. The first piece features a complex, fast-paced melody with many sixteenth and thirty-second notes. The second piece is simpler, with a more relaxed tempo and fewer notes per staff.

SINGLE FIGURE (Tune play'd straight thro')

Set & hands across quite round set & back again lead down the mid: up again & right & left with the top Cu.

DOUBLE FIGURE (Each strain repeated)

Hey contrary sides hey on your own sides set & change places (with the 2^d Cu) allemande hands 4 round at bottom & half poussette at top.

SINGLE FIGURE (Each strain repeated)

The 1st Lady turns the 2^d Gent: 1st Gent: turns the 2^d Lady lead down the mid: up again & right & left.

DOUBLE FIGURE (Tune play'd twice thro' with repeats)

Cast off 2 Cu: & back again swing with right hands round the 2^d Cu: then with left set contrary corners & the double triangle.

My Mother's coming in .



DOUBLE FIGURE (Each strain repeated)

The 3 Ladies lead round the 3 Gent: the 3 Gent: lead round the 3 Ladies lead down the mid: up again allemande & lead round bottom & top.

OR THUS

Whole figure on your own sides cross over one Cu: & half figure round the bottom Cu: lead outsides & the double triangle.

Tar and Feathers .



SINGLE FIGURE (Each strain repeated)

The 1st Lady sets to the 2^d Gent: & turns the 3^d the 1st Gent: sets to the 2^d Lady & turns the 3^d lead your partner down the mid: up again & lead outsides.

OR THUS

Hands 3 round on the Ladies side & the 2^d Lady passess under to her place hands 3 on the Gents side & the 2^d Gent passes under to his place down the mid: & set to the top Cu:.

Hunting the Slipper.

Bits and Scraps.

Four staves of musical notation for 'Hunting the Slipper'. The music is in G major (one sharp) and 2/4 time. It consists of four strains, each ending with a repeat sign. The notation includes various rhythmic patterns such as eighth and sixteenth notes, and rests.

Four staves of musical notation for 'Bits and Scraps'. The music is in G major (one sharp) and 2/4 time. It consists of four strains, each ending with a repeat sign. The notation includes various rhythmic patterns such as eighth and sixteenth notes, and rests.

SINGLE FIGURE (Each strain repeated)

Set & change sides & back again ♪ lead down the mid up again allemande ♪
set contrary corners ♪ and hands six round and back again ♪.

DOUBLE FIGURE (Time play'd twice thro' with repeats)

Hey on your own sides ♪ promenade 3 Cu: ♪ whole pousette ♪ whole figure at bottom ♪
& swing corners ♪ set & change places & back with the 3d Cu: ♪ set 3 across & set 3 in your places ♪
lead outsides turn ♪ and whole figure round the top couple ♪.

SINGLE FIGURE (Each strain repeated)

Cast off 2 Cu: & back again ♪ cross over one Cu:
& half figure round the bottom Cu: ♪.

DOUBLE FIGURE (Time play'd twice thro' with repeats)

The 1st Lady turns the 3d Gent: the 1st Gent: turns 3d Lady ♪
swing with right hands top & bottom ♪ set 3 across & set 3 in your
places ♪ & the double triangle ♪.

Middling thank you.



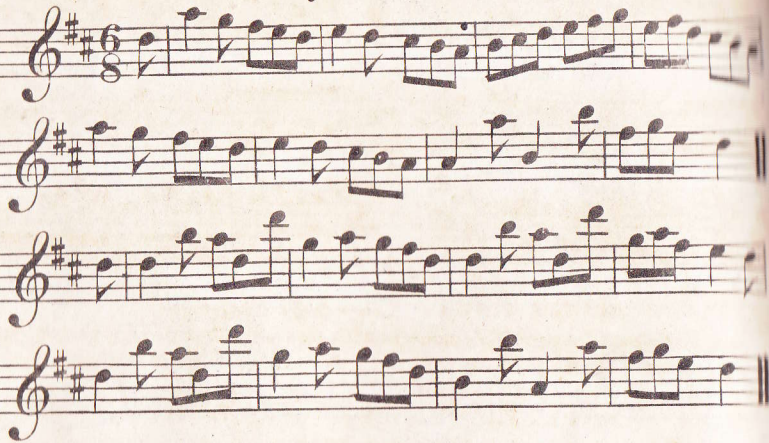
SINGLE FIGURE (Tune play'd straight thro')

Chain figure 6 round ♪ lead down the mid: up again east round the top Cr: & turn ♪.

DOUBLE FIGURE (Each strain repeated)

Set & half right & left set & back again ♪ whole pousette ♪
lead round bottom and top ♪ and turn corners ♪.

The Funny.



SINGLE FIGURE (Tune play'd straight thro')

Chain figure 6 round ♪ lead down the mid: up again & right & left at top ♪.

DOUBLE FIGURE (Each strain repeated)

The 3 Ladies lead round the 3 Gent: ♪ the 3 Gent: lead round the 3 Ladies ♪
cross over 1 Cr: half figure at bottom ♪ & the double triangle ♪.

The Salamanca Castanets.



SINGLE FIGURE (Tune play'd straight thro')

Swing with right hands round the 2^d Cu; then with left \curvearrowright the Lady whole figures round the top Cu: & the Gent: round the bottom \curvearrowright & set contrary corners \curvearrowright .

DOUBLE FIGURE (Each strain repeated)

The 3 Ladies lead round the 3 Gent: \curvearrowright the 3 Gent: lead round the 3 Ladies \curvearrowright whole poussette \curvearrowright set contrary corners \curvearrowright hands 6 round & back again \curvearrowright & the double triangle \curvearrowright .

Mad Cap.

7



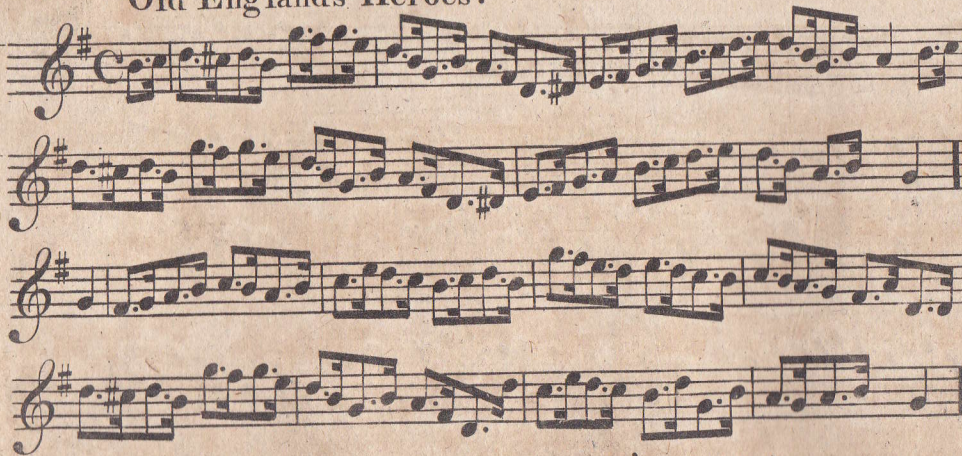
SINGLE FIGURE (Each strain repeated)

Set and change sides set and back again \curvearrowright lead down the middle up again and right and left at top \curvearrowright .

DOUBLE FIGURE (Tune play'd twice thro' with repeats)

The 3 Ladies & 3 Gent: set & lead thro' set & back again \curvearrowright lead down the middle up again set to the top Cu: \curvearrowright swing cor: \curvearrowright and set 3 across and set 3 in your places \curvearrowright .

Old England's Heroes.



SINGLE FIGURE (Tune play'd straight thro')

Set & hands across set and back again ♪ lead down the middle up again and set to the top couple ♪.

DOUBLE FIGURE (Each strain repeated)

Hey contrary sides ♪ hey on your own sides ♪ lead down the mid: up again allemande ♪ & set 3 across & set 3 in your places ♪.

The Bubble.



SINGLE FIGURE (Each strain repeated)

Swing with right hands round 2^d Cu: ♪ cross over one Cu: half figure round the top Cu: & turn ♪.

DOUBLE FIGURE (Tune play'd twice thro' with repeats)

1st Gent turns the 3^d Lady 1st Lady turns the 3^d Gent; ♪ chace round one Cu: & back again ♪ set & change places with the 2^d Cu: & whole figure contrary corners ♪.

Marmont's Retreat.

The Dowdy.

The image shows two columns of musical notation. The left column, titled 'Marmont's Retreat', contains four staves of music in 2/4 time, featuring a rhythmic pattern of eighth and sixteenth notes. The right column, titled 'The Dowdy', contains four staves of music in 6/8 time, featuring a similar rhythmic pattern. A vertical wavy line separates the two columns. The notation includes treble clefs, key signatures (one sharp for Marmont's Retreat, one flat for The Dowdy), and various note values and rests.

DOUBLE FIGURE (Each strain repeated)
 set & change sides set & back again lead down
 the mid: up again and right and left .

DOUBLE FIGURE (Tune play'd twice thro' with repeats)
 set across quite round & back again lead down the mid: up
 the mid: pousette the double triangle & turn corners .

DOUBLE FIGURE (Each strain repeated)

The 3 Ladies lead round the 3 Gent: the 3 Gent: lead round the 3
 Ladies whole pousette swing corners the double triangle whole
 figure at bottom set 3 across & set 3 in your places & turn corners .

Musical notation for the 'In and Out' section, consisting of four staves of music in G major and 2/4 time. The notation includes various rhythmic patterns and rests, with a wavy line indicating a section break between the second and third staves.

Musical notation for the 'Clarissa' section, consisting of four staves of music in G major and 2/4 time. The notation includes various rhythmic patterns and rests, with a wavy line indicating a section break between the second and third staves. Some notes are marked with an 'S' for 'single figure'.

SINGLE FIGURE (Tune play'd straight thro')

Whole figure at top ♪ lead down the mid: up again & half pousette ♪.

DOUBLE FIGURE (Each strain repeated)

Cast off 2 Cu: & back again ♪ chain figure 6 round ♪ lead down the mid: up again allemande ♪ & whole figure contrary cor: ♪.

SINGLE FIGURE (Each strain repeated)

1st Lady turns the 2^d Gent: 1st Gent: turns the 2^d Lady ♪ cross over one Cu: and half figure round the bottom Cu: and turn ♪.

DOUBLE FIGURE (Tune play'd twice thro' with repeats)

Set and change places (with the 2^d Cu:) and back again ♪ whole pousette ♪ the double triangle ♪ and hands 6 round and back again ♪.

The Marchioness of Headfort's Waltz.

The Sequel.

Musical notation for 'The Marchioness of Headfort's Waltz' consisting of four staves of music in 3/4 time. The notation includes various rhythmic patterns, rests, and repeat signs. A vertical wavy line separates this section from 'The Sequel'.

Musical notation for 'The Sequel' consisting of four staves of music in 6/8 time. The notation includes various rhythmic patterns, rests, and repeat signs.

SINGLE FIGURE (Each strain repeated)
 Hands across & back again ♪ lead down the mid: up
 again lead thro' the top Cu: ♪ & turn corners ♪ .

SINGLE FIGURE (Tune play'd straight thro')
 Set and change sides and back again ♪ lead down the
 middle up again and right and left at top ♪ .

DOUBLE FIGURE (Tune play'd twice thro' with repeats)
 Hey figure 6 round ♪ promenade 3 Cu: ♪ whole figure on your own sides ♪
 Hey 3 adios & 3 Gent: set & lead thro' & back again ♪ whole poussette ♪ & leadout: ♪ .

DOUBLE FIGURE (Each strain repeated)
 Hey contrary sides ♪ hey on your own sides ♪ cross over 2 Cu: to the .
 bottom ♪ cross up one Cu: & half figure round the top Cu: ♪ .

The Basket Hornpipe.



SINGLE FIGURE (Tune play'd straight thro')

Set and half right and left and back again ♪ lead down the middle up again and set to the top couple ♪.

DOUBLE FIGURE (Each strain repeated)

The 3 Ladies lead round the 3 Gent: ♪ the 3 Gent: lead round the 3 Ladies ♪ set & change places with the 2^d Cu: ♪ & swing corners ♪.

Thistle Down.



SINGLE FIGURE (Each strain repeated)

Set and hands across set and back again ♪ lead down the middle up again and right and left at top ♪.

DOUBLE FIGURE (Tune play'd twice thro' with repeats)

Set & half right & left set & back again ♪ whole poussette ♪ set contrary corners ♪ & whole figure contrary corners ♪.